



www.fleet.vdo.com

VDO SmartTerminal

Easy and comfortable data handling

With the new VDO SmartTerminal we simplify the unattended downloading of driver card and mass memory data via the Downloadkey even more. The needs of bigger fleets are shaped with it and customers have the possibility to view directly the driver card's data or mass memory file, which is stored on the Download Key, directly during transfer on VDO SmartTerminal.

Via the big 7" TFT-colour display we support the driver or employer at his downloading activity by using a display menu with graphic symbols. With less touches on the keypad information about driver card or mass memory download can be gathered, to make effective use of digital data for incorporation in further planning. In addition the VDO SmartTerminal offers also a reminder function for the Fleet owner on the VDO TerminalTools on the PC to point on due downloads.

The VDO SmartTerminal can be used in different operating modes. It is possible to do a driver card

download or transfer from Downloadkey at any time on the VDO SmartTerminal and to view the data without PC running.

Not only these data can be transferred with an USB stick to the PC, but also connection to the USB interface up to network integration via LAN or WLAN can be done easily. So the import and further processing of download data in TIS-Web® is highly simplified.

With the VDO SmartTerminal data handling around the Digital and Smart Tachograph is more flexible and the robust design makes it very suitable for operation in the fleet. The use of VDO SmartTerminal is guaranteed without specific personnel around the Clock.

VDO SmartTerminal can be adapted without additional components for usage as table or wall device and so it has its comfortable place in the office area or sitting room of drivers.

VDO

VDO SmartTerminal

Easy and comfortable data handling

Functions

- Easy Solution for downloading Driver Card data and Downloadkey (Vehicle Unit data) at any time
- Compatible with the Smart TCO (2nd Generation) Driver cards
- Connection via LAN, WLAN or USB to PC Stand-alone operation without a PC (data transferred via USB stick)
- Possible to import data easily into TIS-Web®
- Meets legal requirements for fleets (downloading, archiving and visualisation of mass memory and driver card data)
- Big TFT Touch screen display 7".
- Basic analysis of the data downloads (driver and vehicle information)
- Wall or table mounted
- Software Update local or via Internet
- 32 GB of internal memory
- New powerful platform to enhance functionality
- RFID Chip Reader

Technical data:

- Microcontroller: Broadcom BCM2837B0, Cortex-A53, 64-bit
- 1GB SDRAM
- Data storage: 32GB over industrial SD card
- LINUX based system
- Gigabit Ethernet over USB 2.0 (max. 300Mbps)
- 2 x USB 2.0 ports (external)
- WiFi 2.4GHz and 5GHz IEEE 802.11.b/g/n/ac wireless LAN
- Smart Card Reader, ISO/IEC 7816 cards
- RFID Reader, NTAG213
- 7" TFT touch screen display, resolution: 800x480pxl
- Hardware real time clock with Supercap-Buffer
- Operating temperature: 0–50°C
- IP protection class: IP 20
- Metal insert for Kensington lock
- Size (LxWxH): 244x129x48mm
- Weight: 575g
- Power supply: 5V, 3A

System requirements for Software on PC

- Windows® 10, Windows® 8 or Windows® 7, with latest Service Pack
- Windows® Server 2019, 2016, 2012
- One free USB port or Network connection
- Processor: min. 1,5 GHz
- Free Hard disk space
- approx 1 GB
- 2 GB RAM

Package content

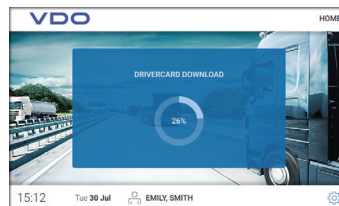
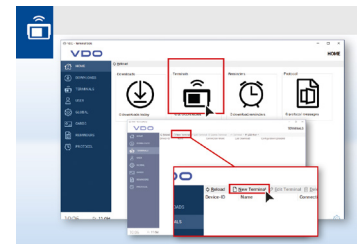
- VDO SmartTerminal
- 100-240 volt power supply
- Network cable RJ45 (Ethernet)
- USB cable
- Quick start guide
- Cleaning cloth
- Cleaning card

Order number:

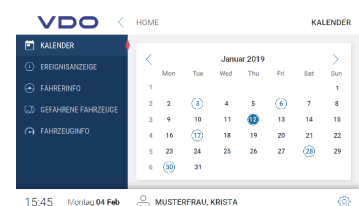
VDO SmartTerminal
(for wall and table mounting)
2910002168600



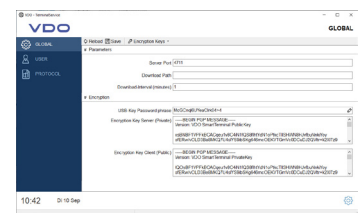
VDOSmartTerminalSetup.exe



TFT-colour display with graphic symbols



Downloading of driver card and mass memory data



VDO TerminalService

